



## Contact us

If you have a query please contact one of the team:



Leanne Beeson  
Senior Trial Manager

E-mail: [mifemiso@trials.bham.ac.uk](mailto:mifemiso@trials.bham.ac.uk)  
Tel: 0121 414 9011



Dr Justin Chu  
National Clinical Coordinator  
E-mail: [justinchu@doctors.org.uk](mailto:justinchu@doctors.org.uk)  
Tel: 07810 350470



Dr Adam Devall  
Team Leader for Miscarriage Research  
E-mail: [a.j.devall@bham.ac.uk](mailto:a.j.devall@bham.ac.uk)  
Tel: 07971 823452



Mary Nulty  
Data Manager  
E-mail: [mifemiso@trials.bham.ac.uk](mailto:mifemiso@trials.bham.ac.uk)  
Tel: 0121 414 9011

# MifeMiso Trial



ISSUE 7

APRIL 2019

## The final countdown - only 100 to go!

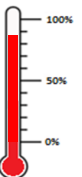


We wish you all a Happy Easter and hope you have an eggcellent Easter break!



86% of the way!

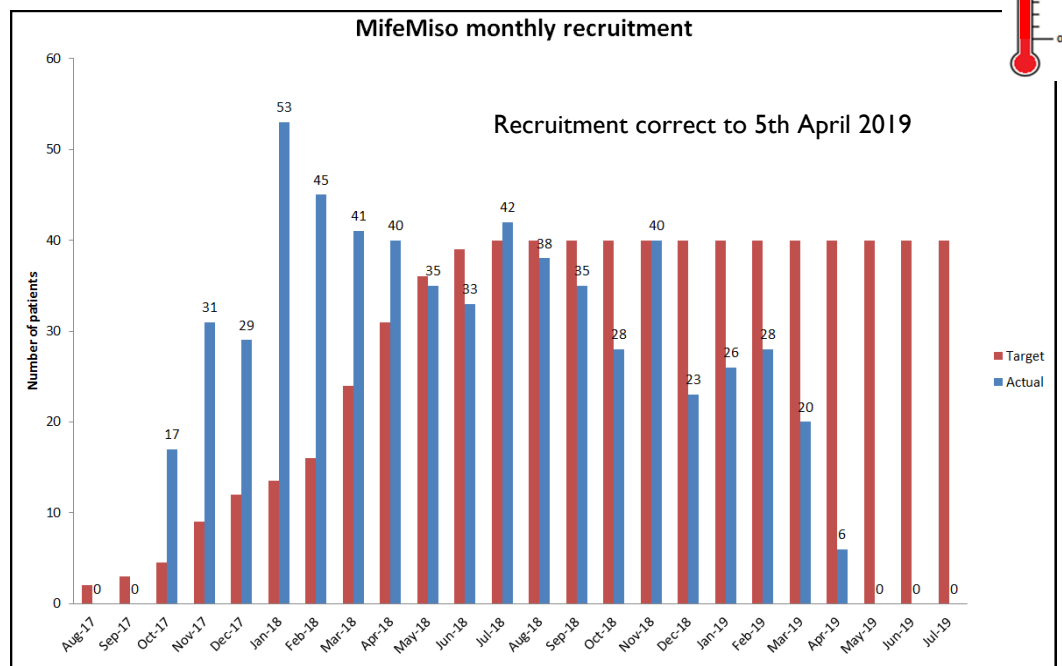
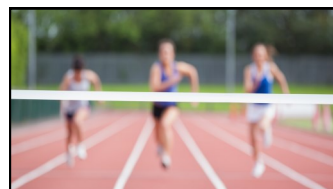
610 recruited/710 total target



Welcome to the seventh edition of the MifeMiso newsletter as we enter Spring! We're egg-cited to announce that we now have **only 100 women left to recruit to MifeMiso** and we're over 85% of the way to achieving our recruitment target of 710!

This is a fantastic achievement from all our sites and once again we'd like to extend our gratitude for your hard work and dedication in recruiting to this important trial.

In order to ensure we finish on time by the end of July 2019, we need to recruit a **minimum of 30** women each month from now on. As you can see in the below graph we've experienced a dip over the last few months so let's pick up the pace and make it a **sprint finish** to the end!

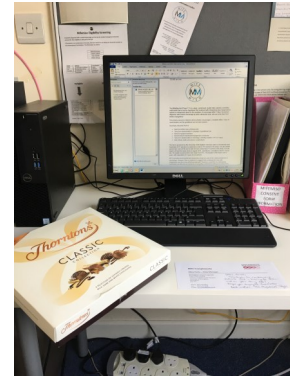


# Recruitment prizes!

For the last 100 women left to recruit we will be offering a **TROPHY PRIZE** (pictured above right) to each site that recruits every 10th woman i.e. participant #610, #620 etc up to #710! Congratulations to the team at **West Middlesex University Hospital** for recruiting #610—we will be posting your trophy out shortly! Will your site be a winner?!



A special thank you to **Annie Deacon and the team at Southmead Hospital** for randomising a lady to MifeMiso back in February. Annie braved the snow on her walk in to work to randomise a lady on her day off! We hope you enjoyed the chocolates (pictured right)!



Finally, congratulations to the team at **St Helier Hospital** for recruiting the **600th lady** to MifeMiso! We hope you enjoyed your Easter hamper!



St Helier team with Easter hamper for recruiting 600th MifeMiso lady!



## Substantial amendment 5



We will be submitting a final substantial amendment in due course (substantial amendment 5). The main changes include:

- **Protocol**—update to secondary outcomes, update to health economic evaluation, update to statistical analyses, addition of section regarding Blinded End-Point Review Committee for reviewing cases where the primary outcome has not been assessed by USS at day 6-7 and clarification regarding unblinding
- Change of P.I at Liverpool Women's Hospital
- Update to sponsor representative and lead R&D contact details

We will notify sites once the amendment has been submitted and will forward copies of the amendment documentation for review



## MifeMiso Meet up, 21/05/2019

Save  
the  
Date



The next 'MifeMiso Meet Up' is scheduled for **Tuesday 21st May 2019 at 1-2pm**. Please RSVP if you would like to attend and haven't already let us know. We hope you can join us and we look forward to speaking with you

## Data queries

Please ensure that you are regularly checking the 'monitoring' tab on the MifeMiso database for any queries raised. Once you have checked your queries please save your responses so these can be checked by the MifeMiso team. If you have any queries about this, please contact a member of the team

## BCTU Easter Closure—please note



Please note that BCTU will be closed from **Friday 19th April 2019 and will re-open on Thursday 25th April 2019**. During this period the BCTU telephone randomisation service will be unavailable however the online randomisation system ([www.medscinet.net/mifemiso](http://www.medscinet.net/mifemiso)) will continue to be available 24/7.

If you need to report an SAE during this period please continue to email reports to the MifeMiso NHS.net account ([bwh-tr.mifemiso@nhs.net](mailto:bwh-tr.mifemiso@nhs.net)) or fax to 0121 415 9136

## BMJ Uncertainties paper—What is the best method for managing early miscarriage?

The central trial team have been invited to submit a paper regarding the uncertainties surrounding management of miscarriage as part of the BMJ Uncertainties series. We are currently waiting on feedback from reviewers and will share the paper with sites once this is published



## Change of staff - Mary Nulty

MifeMiso Data Manager, Mary Nulty, started her new role within the BCTU Women's Health team on Monday 4th March 2019. Mary has moved to work on the 'WILL' trial as a Senior Data Manager. Although Mary may continue to provide temporary ad hoc support on MifeMiso please ensure all queries are sent to the MifeMiso mailbox ([mifemiso@trials.bham.ac.uk](mailto:mifemiso@trials.bham.ac.uk)) so these can be dealt with promptly. Congratulations to Mary and we wish her all the best!







*Happy Easter from the MifeMiso  
trial team!*



- 1. Missed Miscarriage*
- 2. Medical Management*
- 3. Think MifeMiso!*



Chief Investigator: Professor Arri Coomarasamy

Coordinating centre: Birmingham Clinical Trials Unit

Tel: 0121 414 9011

W: [medscinet.net/mifemiso](https://medscinet.net/mifemiso)

✉: [mifemiso@trials.bham.ac.uk](mailto:mifemiso@trials.bham.ac.uk)

🐦: [@mifemiso\\_trial](https://twitter.com/mifemiso_trial)

**Tommy's**  
National Centre for  
Miscarriage Research

UNIVERSITY OF  
BIRMINGHAM

**BCTU**  
Birmingham Clinical Trials Unit

**NIHR** | National Institute  
for Health Research