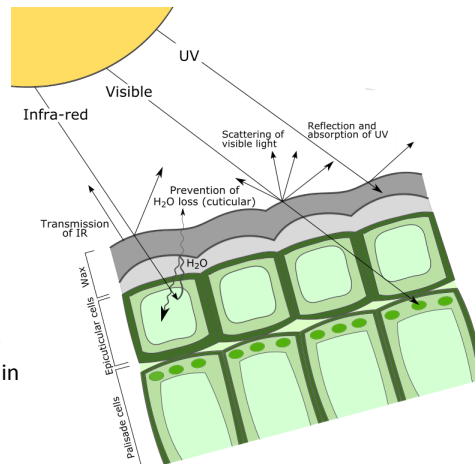


Bridget Warren^{1*}, Yvette Eley¹, James Bendle¹

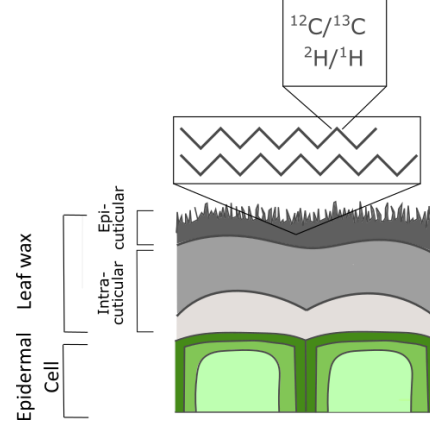
¹School of Geography, Earth and Environmental Sciences, University of Birmingham *baw888@student.bham.ac.uk

What are plant waxes?

- ◆ Forms a shiny, impermeable layer on leaf surfaces
- ◆ Found in all land plants
- ◆ Used for
 - ◇ Preventing water loss
 - ◇ Preventing radiation damage
 - ◇ Controlling leaf temperature
 - ◇ Interactions with the environment
- ◆ Chemical composition of leaf wax changes with environment leaves were grown in—e.g. in warmer conditions, plants alter chemical composition to raise wax melting point

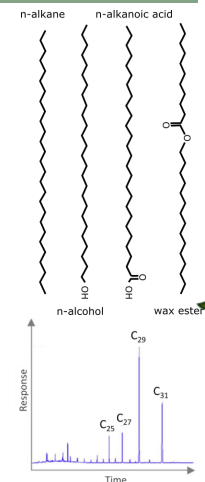


- ◆ Leaf waxes contain organic molecules, polymers
- ◆ 2 main layers of wax, epicuticular (mostly straight chained organic compounds, e.g. alkanes, aldehydes) and intracuticular (organics embedded in a polymer matrix)
- ◆ Waxes formed in epidermal cells are transported to leaf surface
- ◆ My research focusses on *n*-alkanes; simple chains of carbon and hydrogen atoms
- ◆ I am looking at isotopes of carbon and hydrogen (¹³C/¹²C, ²H/¹H), chain length, and carbon preference index (ratio of odd to even numbered alkanes)



Plant waxes and the geologic record

- ◆ Leaf wax alkanes do not decay on leaf death, and enter the sediment, become part of the geological record
- ◆ Easily identifiable in sediment as plant waxes— more chains with odd than even numbers of carbon atoms
- ◆ Waxes can preserve information on:
 - ◇ Temperature
 - ◇ Local habitat changes (grassland/forest cover)
 - ◇ Water supply/rainfall
 - ◇ Plant metabolism/nutritional information
 - ◇ Past atmospheric CO₂ concentration (potentially)
- ◆ Leaf waxes in geologic record therefore preserve information on the conditions of their formation



My research

- ◆ Use the highly controlled BIFoR leaf samples to look at the influences of metabolism and climate on chemical characteristics of leaf wax *n*-alkanes
- ◆ Carbon isotope composition of plants theoretically decreases with higher CO₂ concentration—can use this to look at past CO₂ concentrations
- ◆ Applications in the geologic record—apply any new palaeoclimate calibrations to the geologic record for environmental and climatic reconstruction
- ◆ Current work—what do carnivorous plants get out of their prey?

